

Skyline SLOT BANNER - ON SQUARE TUBE ULTRA (2.5") - TOP TO BOTTOM TUBE MOUNT - INSIDE SPAN - SINGLE SIDED

REFERENCE LETTER

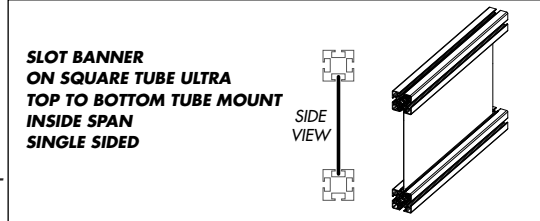
Individual Banner Grid - Order As: SB Part Number

A, B
C, D

Tag Name: **Numa ORL4322**

Dealer's Name: Skyline Central Florida Dealer's Number: 1085

Artist's Name: Cheryl Clowes (Layout) Ext: 218 Rep: Bill Diver



scale:7%



SINGLE SIDED GRID

PRODUCTION SPECIFICATIONS

1 Enter your hardware mounting dimensions here:

11.66 TUBE INSIDE OPENING WIDTH

80.45 TUBE INSIDE OPENING HEIGHT

NOTE: Whenever a horizontal and vertical tube join, they are connected with a plastic scuff plate that will add 0.08". For example, a 46" opening becomes 46.16" with both end plates. This will affect just one dimension above, not both. In addition, when calculating hardware opening sizes, the exact dimension of each square ultra tube is 2.4".

2 Increase / Decrease your dimensions by the amounts indicated to calculate your new Final Art Dimensions:

SUBTRACT 0.125" FROM OPENING WIDTH

ADD 2" TO OPENING HEIGHT

3 Fill in your new Final Art Dimensions below:

11.535 FINAL ART WIDTH

82.45 FINAL ART HEIGHT

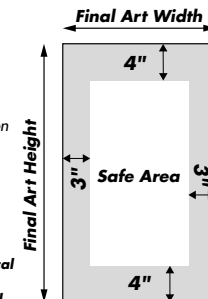
4 Within the Final Art Dimensions, avoid putting critical elements in the gray "Finishing Area" as indicated below:

IMPORTANT INFORMATION!

Due to variations in the fabric production process including fabric stretch, tension and seams, we cannot control the exact final placement of artwork.

The gray areas will be used for production finishing and could be partially or completely hidden from view or trimmed off on the final product.

Therefore, this gray area should include the background art of your layout, but must not include critical photographic areas, logos or text. **You must keep critical elements in the white "safe area" or it may not show or get cut off on the final product.**



COLOR SPECIFICATIONS

	print as is
#	
#	

DEALER & CUSTOMER USE ONLY

(Electronic Purchase Determines Final Production)

	5/1/2012

CUSTOMER SIGNATURE*

DATE

*Skyline is not responsible for typographical errors.

Skyline SLOT BANNER - ON SQUARE TUBE ULTRA (2.5") - TOP TO BOTTOM TUBE MOUNT - INSIDE SPAN - SINGLE SIDED

REFERENCE LETTER

Individual Banner Grid - Order As: SB Part Number

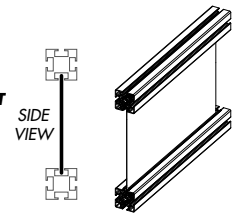
E,F

Tag Name: **Numa ORL4322**

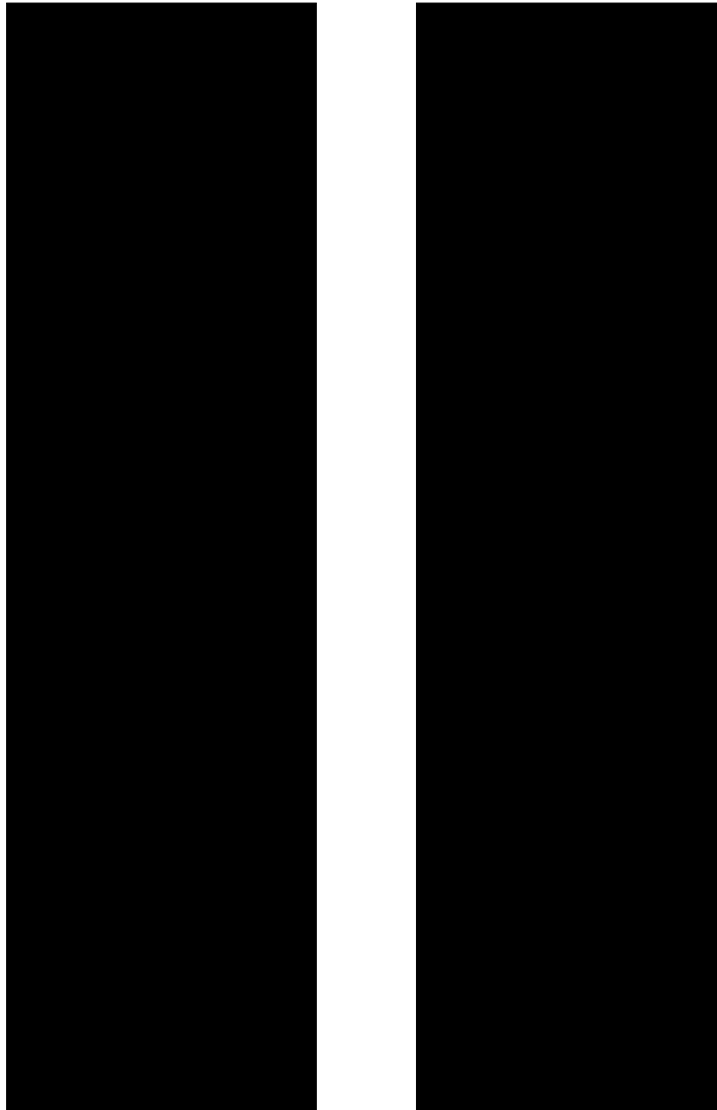
Dealer's Name: Skyline Central Florida Dealer's Number: 1085

Artist's Name: Cheryl Clowes (Layout) Ext: 218 Rep: Bill Diver

SLOT BANNER
ON SQUARE TUBE ULTRA
TOP TO BOTTOM TUBE MOUNT
INSIDE SPAN
SINGLE SIDED



scale: 7%



SINGLE SIDED GRID

REFERENCE LETTER

E

REFERENCE LETTER

F

PRODUCTION SPECIFICATIONS

1 Enter your hardware mounting dimensions here:

23.16 TUBE INSIDE OPENING WIDTH

80.45 TUBE INSIDE OPENING HEIGHT

NOTE: Whenever a horizontal and vertical tube join, they are connected with a plastic scuff plate that will add 0.08". For example, a 46" opening becomes 46.16" with both end plates. This will affect just one dimension above, not both. In addition, when calculating hardware opening sizes, the exact dimension of each square ultra tube is 2.4".

2 Increase / Decrease your dimensions by the amounts indicated to calculate your new Final Art Dimensions:

SUBTRACT 0.125" FROM OPENING WIDTH

ADD 2" TO OPENING HEIGHT

3 Fill in your new Final Art Dimensions below:

23.035 FINAL ART WIDTH

82.45 FINAL ART HEIGHT

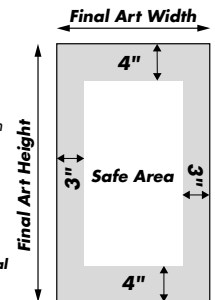
4 Within the Final Art Dimensions, avoid putting critical elements in the gray "Finishing Area" as indicated below:

IMPORTANT INFORMATION!

Due to variations in the fabric production process including fabric stretch, tension and seams, we cannot control the exact final placement of artwork.

The gray areas will be used for production finishing and could be partially or completely hidden from view or trimmed off on the final product.

Therefore, this gray area should include the background art of your layout, but must not include critical photographic areas, logos or text. **You must keep critical elements in the white "safe area" or it may not show or get cut off on the final product.**



COLOR SPECIFICATIONS

	print as is
#	
#	

DEALER & CUSTOMER USE ONLY

(Electronic Purchase Determines Final Production)

	5/1/2012

CUSTOMER SIGNATURE*

DATE

*Skyline is not responsible for typographical errors.

Skyline SLOT BANNER - ON SQUARE TUBE ULTRA (2.5") - TOP TO BOTTOM TUBE MOUNT - INSIDE SPAN - SINGLE SIDED

REFERENCE LETTER

Individual Banner Grid - Order As: SB Part Number

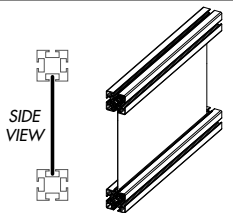
G

Tag Name: **Numa ORL4322**

Dealer's Name: Skyline Central Florida Dealer's Number: 1085

Artist's Name: Cheryl Clowes (Layout) Ext: 218 Rep: Bill Diver

SLOT BANNER
ON SQUARE TUBE ULTRA
TOP TO BOTTOM TUBE MOUNT
INSIDE SPAN
SINGLE SIDED



SINGLE SIDED GRID



PRODUCTION SPECIFICATIONS

1 Enter your hardware mounting dimensions here:

132.41 TUBE INSIDE OPENING WIDTH

80.45 TUBE INSIDE OPENING HEIGHT

NOTE: Wherever a horizontal and vertical tube join, they are connected with a plastic scuff plate that will add 0.08". For example, a 46" opening becomes 46.16" with both end plates. This will affect just one dimension above, not both. In addition, when calculating hardware opening sizes, the exact dimension of each square ultra tube is 2.4".

2 Increase / Decrease your dimensions by the amounts indicated to calculate your new Final Art Dimensions:

SUBTRACT 0.125" FROM OPENING WIDTH

ADD 2" TO OPENING HEIGHT

3 Fill in your new Final Art Dimensions below:

132.285 FINAL ART WIDTH

82.2 FINAL ART HEIGHT

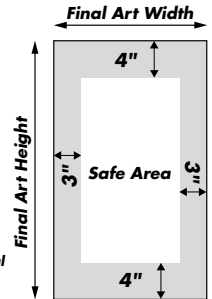
4 Within the Final Art Dimensions, avoid putting critical elements in the gray "Finishing Area" as indicated below:

IMPORTANT INFORMATION!

Due to variations in the fabric production process including fabric stretch, tension and seams, we cannot control the exact final placement of artwork.

The gray areas will be used for production finishing and could be partially or completely hidden from view or trimmed off on the final product.

Therefore, this gray area should include the background art of your layout, but must not include critical photographic areas, logos or text. **You must keep critical elements in the white "safe area" or it may not show or get cut off on the final product.**



COLOR SPECIFICATIONS

	pms 3125
	#
	#

DEALER & CUSTOMER USE ONLY

(Electronic Purchase Determines Final Production)

<input type="text"/>	<input type="text"/>
<input type="text"/>	4/30/2012

CUSTOMER SIGNATURE*

DATE

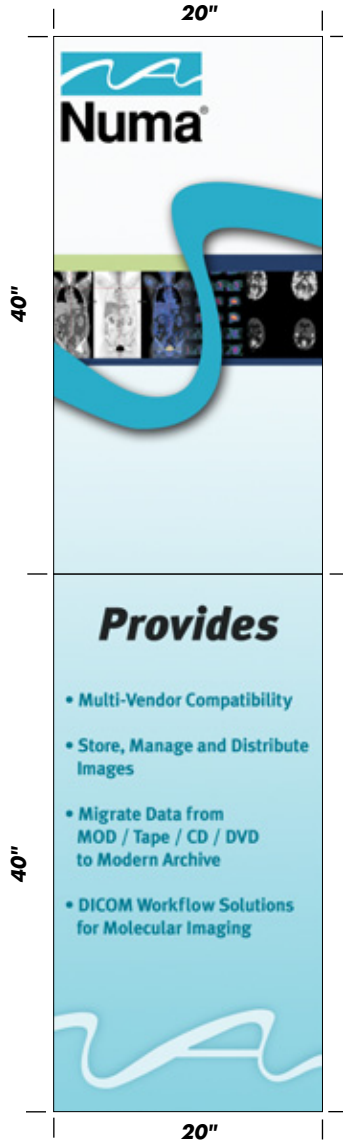
*Skyline is not responsible for typographical errors.

REFERENCE LETTER

H,i

Tag Name: **Numa ORL4322**
 Dealer's Name: Skyline Central Florida Dealer's Number: 1085
 Artist's Name: Cheryl Clowes (Layout) Ext: 218 Rep: Bill Diver

Scale: 7%



REFERENCE LETTER
H

REFERENCE LETTER
i

PRODUCTION SPECIFICATIONS

PART NUMBERS USED ON THIS GRID

Board-5562	

Fill in below ONLY if your graphic is double sided.

DOUBLE-SIDED INSTRUCTIONS:

THE GRAPHIC ON THE OTHER SIDE IS...

THE SAME:

DIFFERENT: → THE OTHER SIDE IS:

CHECK ONE

COLOR SPECIFICATIONS

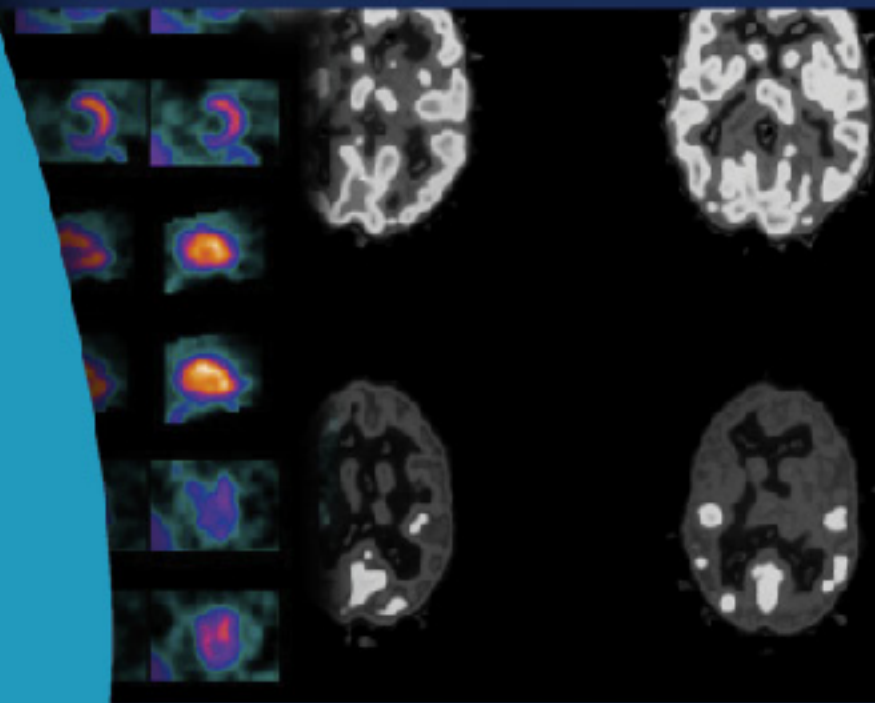
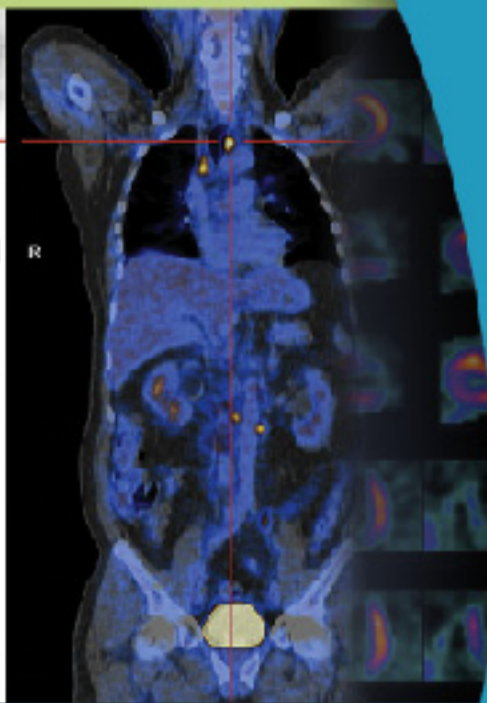
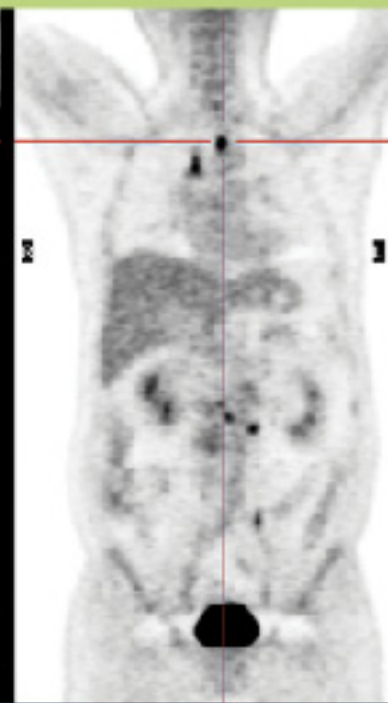
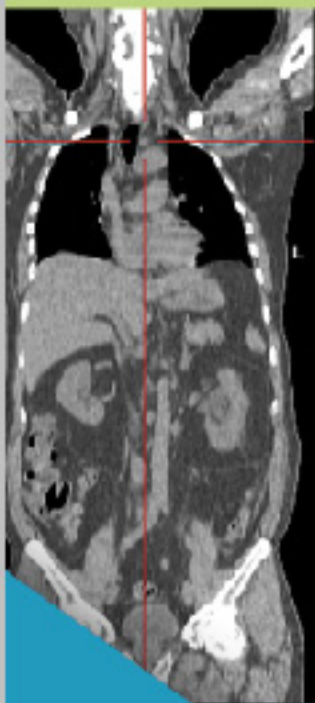
	pms 3125
	#
	#

DEALER & CUSTOMER USE ONLY

Electronic Purchase Determines Final Production

	5/1/2012

CUSTOMER SIGNATURE* _____ DATE _____
*Skyline is not responsible for typographical errors.

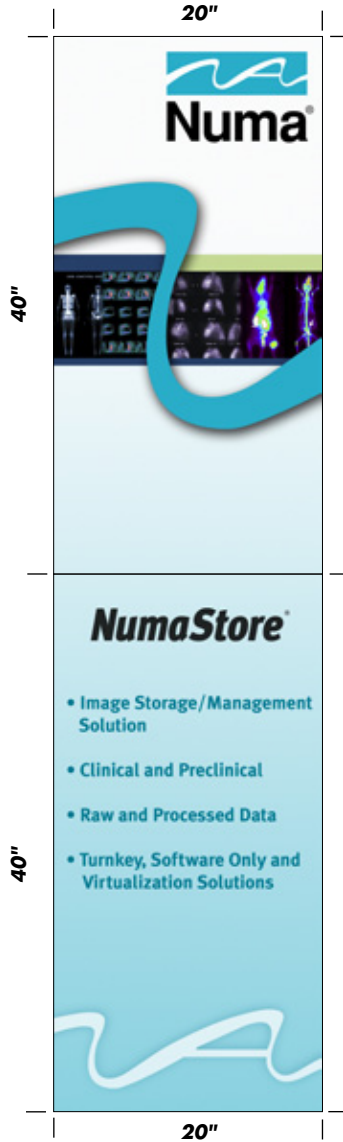


REFERENCE LETTER

J,K

Tag Name: **Numa ORL4322**
 Dealer's Name: Skyline Central Florida Dealer's Number: 1085
 Artist's Name: Cheryl Clowes (Layout) Ext: 218 Rep: Bill Diver

Scale: 7%



REFERENCE LETTER
J

REFERENCE LETTER
K

PRODUCTION SPECIFICATIONS

PART NUMBERS USED ON THIS GRID

Board-5562	

Fill in below ONLY if your graphic is double sided.

DOUBLE-SIDED INSTRUCTIONS:

THE GRAPHIC ON THE OTHER SIDE IS...

THE SAME:

DIFFERENT: → THE OTHER SIDE IS:

CHECK ONE

COLOR SPECIFICATIONS

	pms 3125
	#
	#

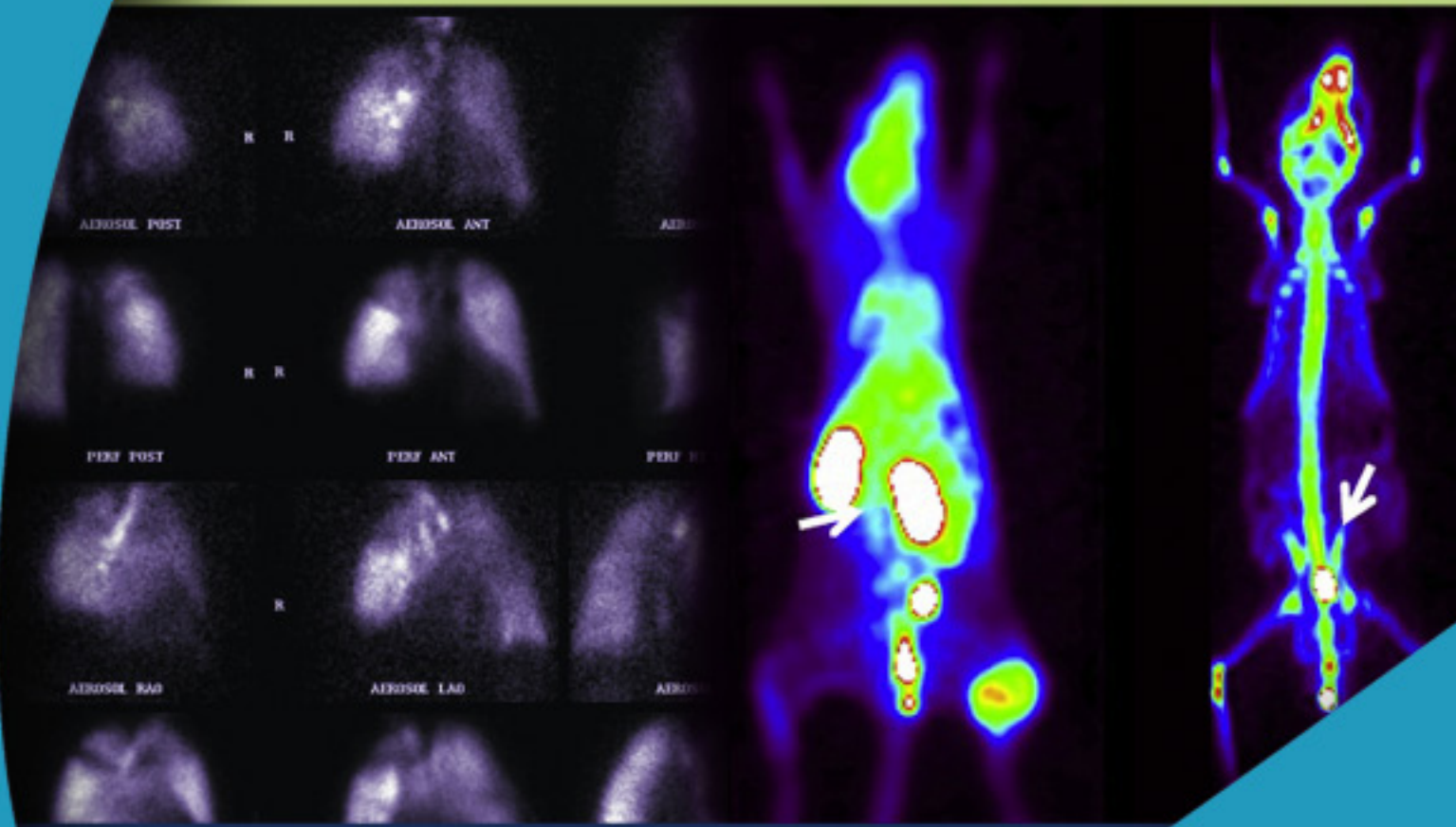
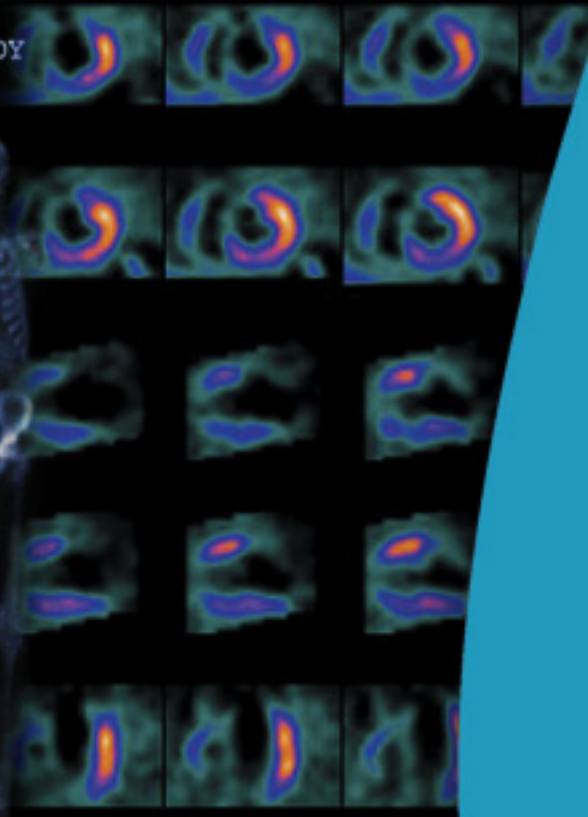
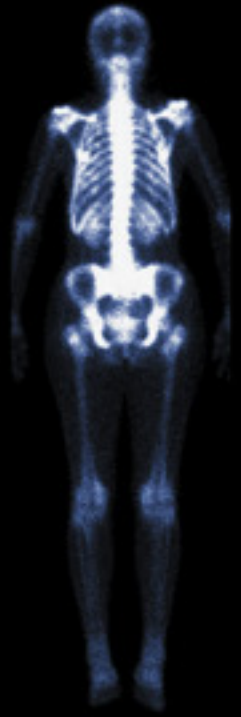
DEALER & CUSTOMER USE ONLY

Electronic Purchase Determines Final Production

	5/1/2012

CUSTOMER SIGNATURE* _____ DATE _____
*Skyline is not responsible for typographical errors.

BONE SCAN TOTAL BODY

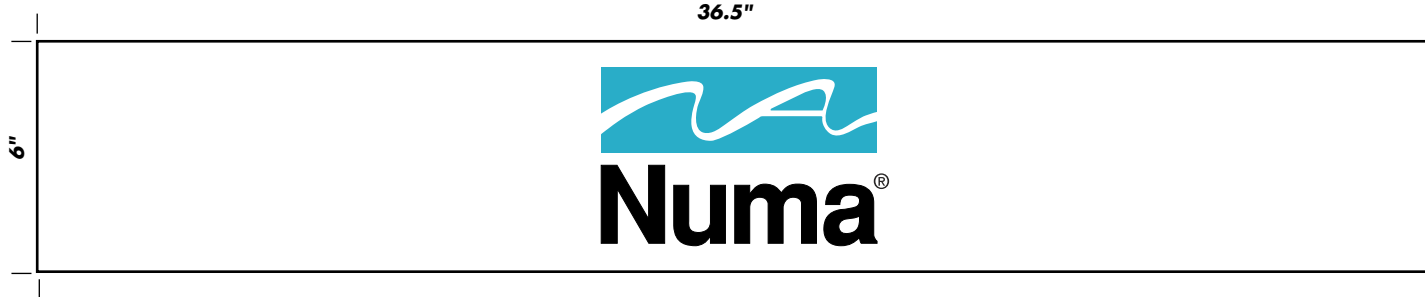


REFERENCE LETTER

L,M

Tag Name: **Numa ORL4322**
Dealer's Name: Skyline Central Florida Dealer's Number: 1085
Artist's Name: Cheryl Clowes (Layout) Ext: 218 Rep: Bill Diver

Scale: 20%



PRODUCTION SPECIFICATIONS

PART NUMBERS USED ON THIS GRID

Board-5562	

Fill in below ONLY if your graphic is double sided.

DOUBLE-SIDED INSTRUCTIONS:

THE GRAPHIC ON THE OTHER SIDE IS...

THE SAME:

DIFFERENT: → THE OTHER SIDE IS:

CHECK ONE

COLOR SPECIFICATIONS

	pms 3125
	#
	#

DEALER & CUSTOMER USE ONLY

Electronic Purchase Determines Final Production

	5/1/2012

CUSTOMER SIGNATURE* _____ DATE _____

*Skyline is not responsible for typographical errors.