

LRAD Setup Instructions

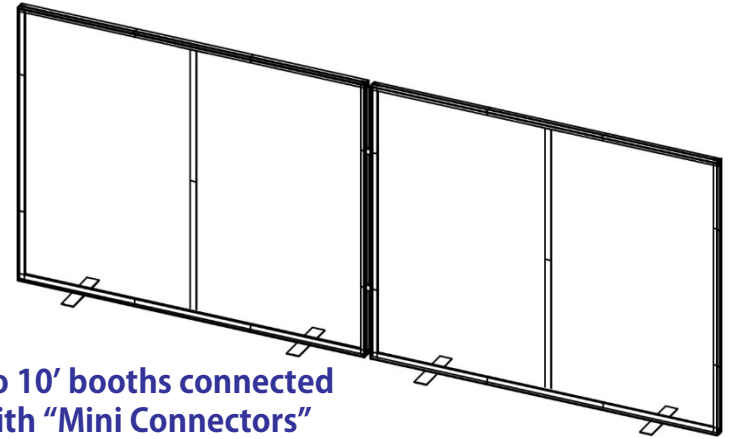
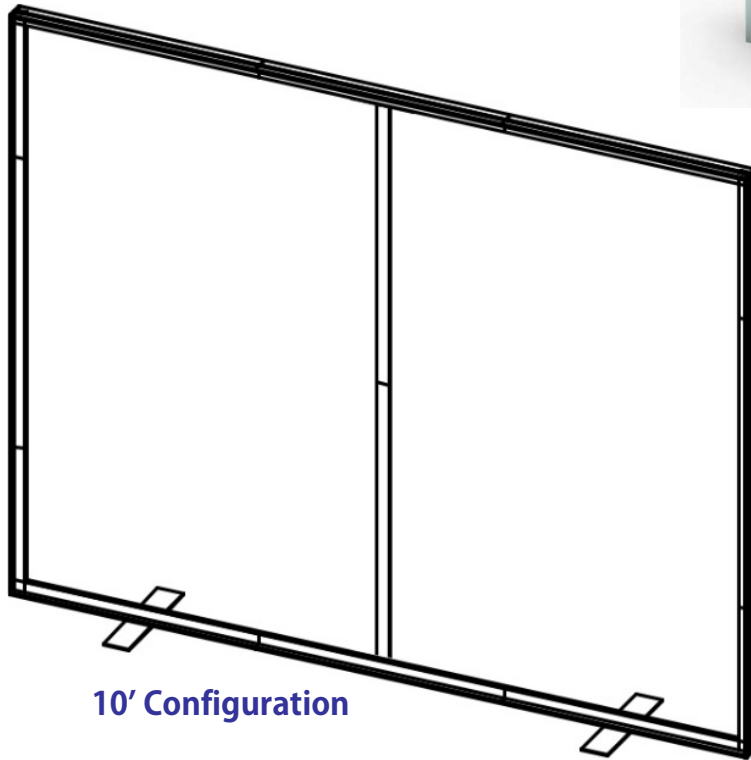
**For Assistance,
Contact:
EPI Colorspace
301-990-2666**

**Account Rep
Larry Forte x236**

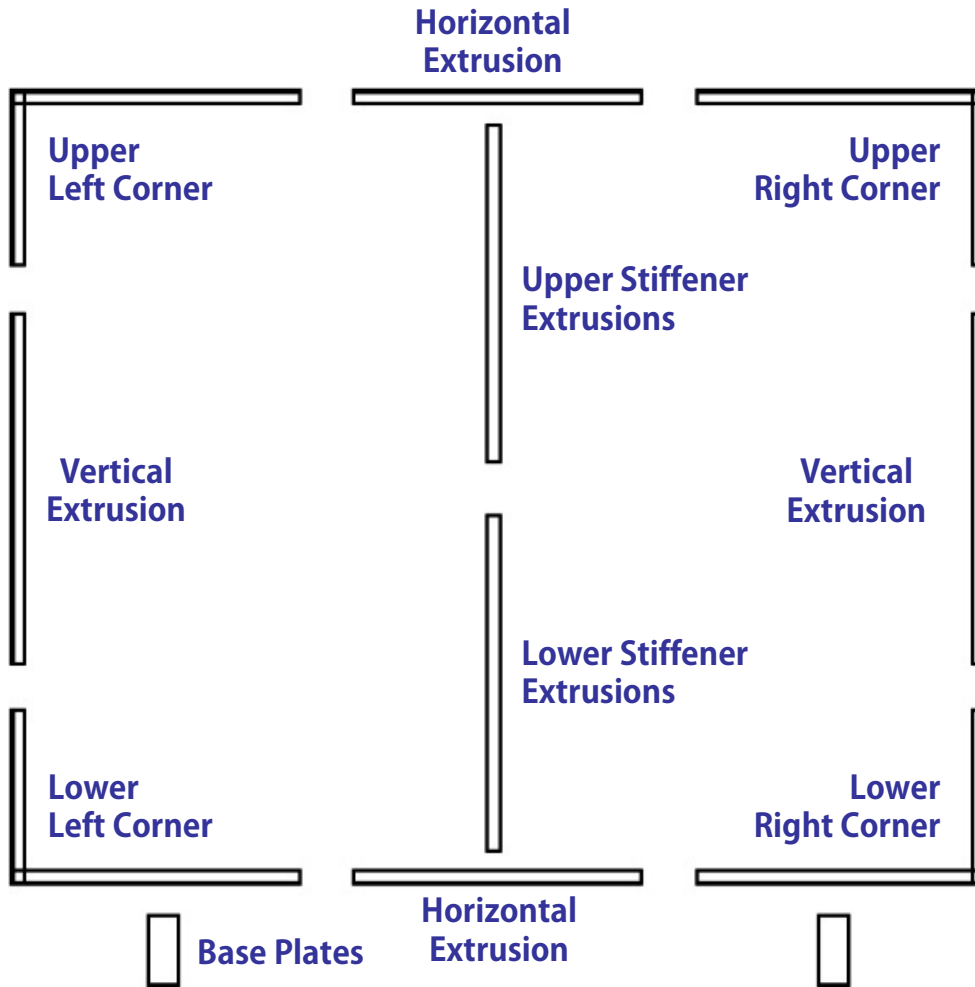
**Designer/Builder
*Pat Stone x219***

**NOTE - Pay close attention to
Packaging as proper
Re-packaging will extend the
Life and Look of your Exhibit**

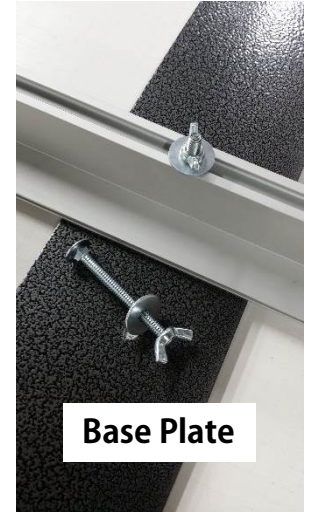
LRAD 10' and 20' Configurations



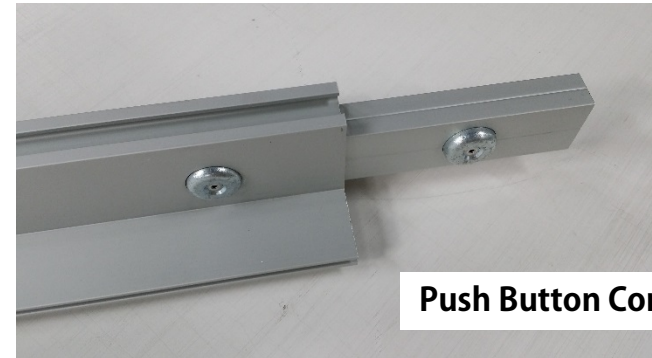
10' Frame



Corner Connector (pre-assembled)

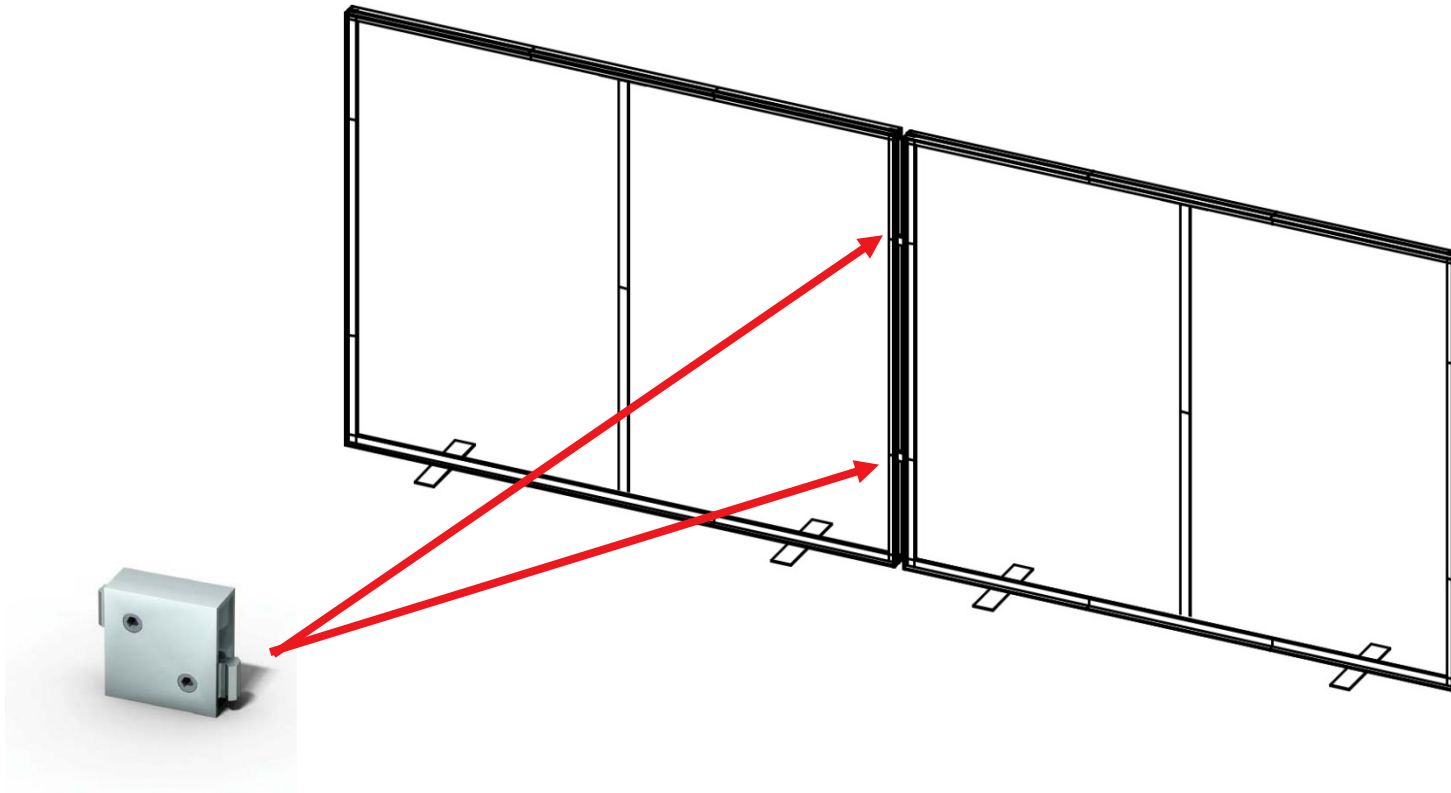


Base Plate



Push Button Connector

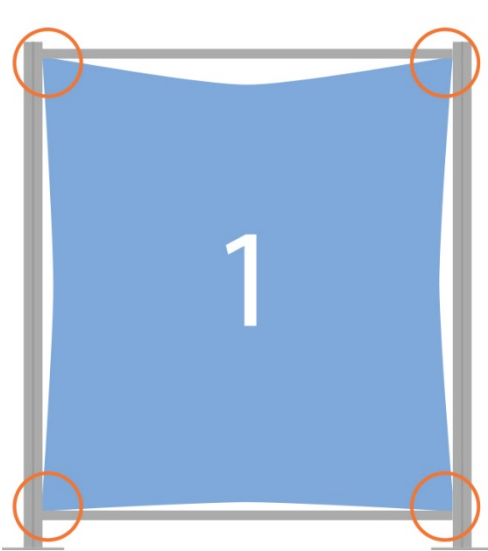
20' Frame



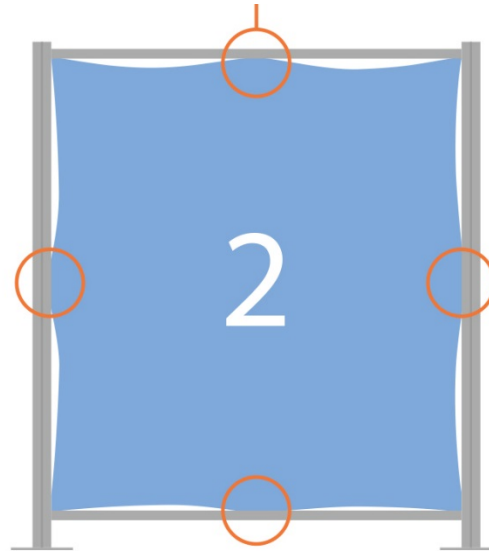
20' Frame is composed of two 10' Frames connected with two Mini-Connectors

Fabric Installation

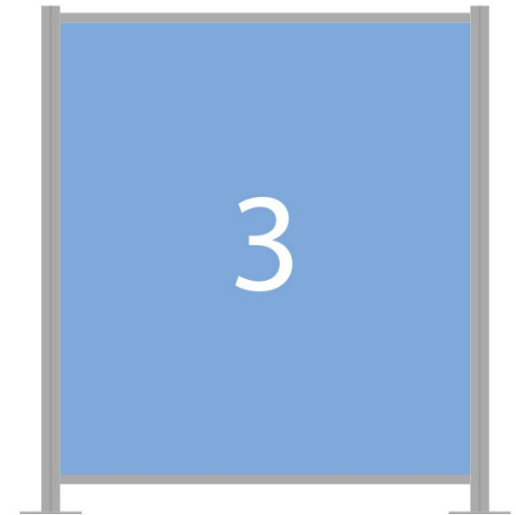
- **Attach Fabric Graphic**
- **Attach Header and Side Panels**



1. Starting in one corner of the display, tuck silicone edge of graphic into channel. Repeat for the other three corners.



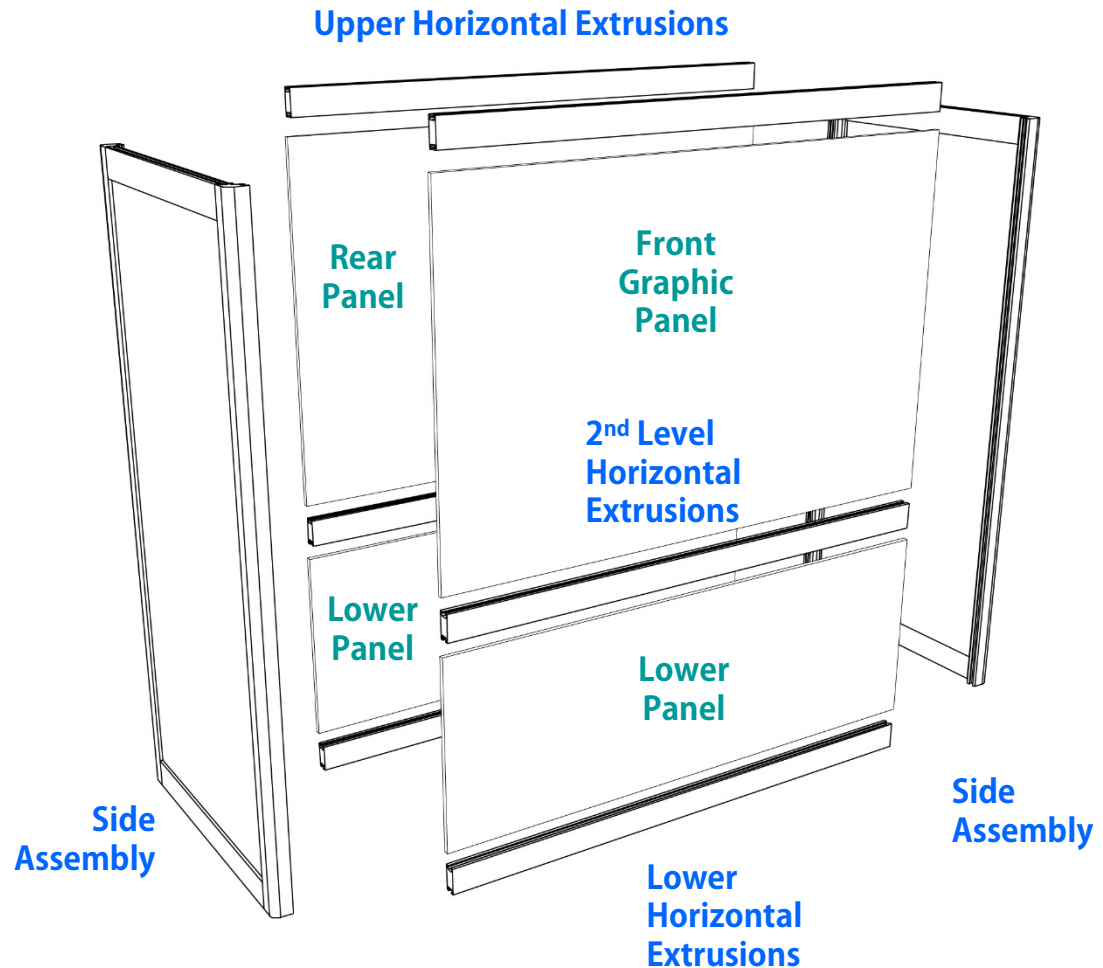
2. Tuck silicone into the center of all four sides.



3. Work your way across top of graphic tucking silicone edge into channel. Repeat for the sides and bottom.

Rental Counter

- Connect one of the *Side Assemblies* to the *Lower Horizontal Extrusions*
 - Side Assemblies should always be kept together to aid in setup and takedown
 - One of the Side Assemblies contains the Door
 - Connectors tighten at the end of the extrusions (never remove connectors)
- Connect the other *Side Assembly* to the *Lower Horizontal Extrusions*
- Insert the *Front and Rear Lower Panels*
- Attach the *2nd Level Horizontal Extrusions*
- Insert the *Front Graphic Panel* and *Rear Filler Panel*
- Attach the *Upper Horizontal Extrusions*
- *Countertop* rests on top of Frame



10' Booth Packing



There are TWO 10' booths, each packed in its own case

Shrink Wrap common pieces so they will not get scratched during shipping

